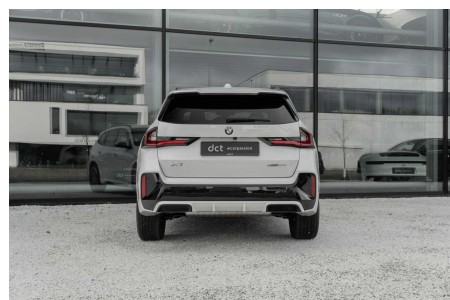
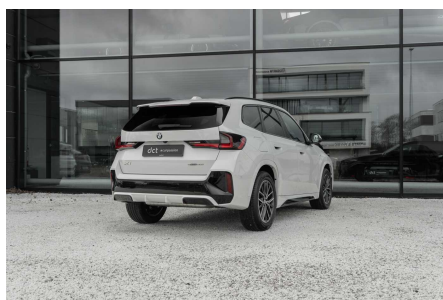


BMW X1

SDRIVE 20I MPACK PANOROF ADAPTIVE HEADLIGHTS

€ 37.900



Besuchen Sie dieses Auto unter DCT Knokke



KNOKKE

Natiënlaan 110
T +32 490 56 98 99
knokke@dct.be
BTW BE 0847 915 701

SPEZIFIKATIONEN

Hersteller	BMW
Modell	X1
Erstzulassung	04/2025
Kilometerstand	6.450 km
Kraftstoffart	Benzin
Motorleistung (kW/Pk)	115 kW / 156 Pk
Hubraum	1499 cc
Übertragung	Automatik (7)
Körperstil	Geländewagen/SUV
Farbe	Weiß solid
Mehrwertsteuerfrei	Nein
Preis	€ 37.900

Möchten Sie dieses Auto in einer anderen Farbe oder Konfiguration? Lassen Sie es uns wissen und wir werden nach dem richtigen Match suchen!

HÖHEPUNKTE

- BMW X1 sDrive 20i - Mpack PanoRoof Adaptive Headlights
- Mineral White Metallic
- Veganza perforated black interior
- 18" Bicolor wheels
- S01AG Larger capacity fuel tank
- S01CE Mild Hybrid recovery system S02VB Tyre pressure monitoring system
- S02VC Tyre repair kit
- S03MC M longitudinal rails for the roof rack in gloss black shadow line
- S0478 Isofix child seat attachment system for front passenger seat
- S05AV Active Guard
- S05DM Parking Assistant
- S0654 DAB+ radio
- S06AE TeleServices
- S06AF Mandatory emergency call
- S06PA Personal eSIM
- S02PA Anti-theft wheel bolts
- S02TE Automatic gearbox with paddle shifters
- S0302 Remote control alarm system
- S0337 M Sport package
- S02VF M adaptive suspension
- S0481 Sports seats for driver and front passenger
- S04NW Luxury instrument cluster
- S0710 M leather sports steering wheel
- S0760 M exterior trim in gloss black Shadow Line
- S0775 M roof in anthracite
- S0402 Panoramic glass roof
- S0413 Boot partition net
- S0420 Sun protection tinted windows
- S07EV Premium package
- S0322 Comfort access
- S0430 Interior and exterior mirror package
- S0431 Interior mirror with automatic anti-glare adjustment
- S0552 Adaptive LED headlights
- S05AC Motorway light assistant
- S06NX Wireless charging tray
- S09QV Driving assistant plus preparation
- Private Car - NO VAT Refundable